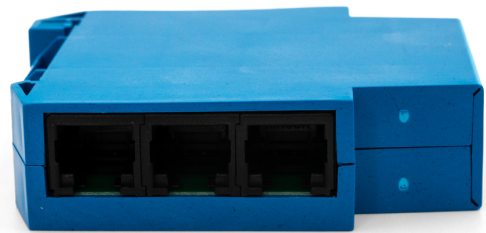
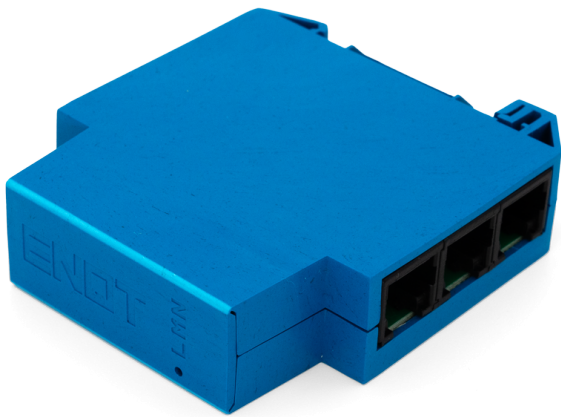


# LMN Hub 6-Port

TECHNICAL DATA SHEET

**ENQT**  
EXPERTS IN NETWORK  
QUALITY TESTING



Do you have questions about  
our products?

 +49 40 35 73 20 65

 [vertrieb@enqt.de](mailto:vertrieb@enqt.de)

## Description:

The 6-port LMN Hub allows several LMN devices to be flexibly connected to form a bus, including 1:n topologies.

The space-saving design with a width of only 18 mm (1M) allows installation even in confined spaces. Tool-free mounting and optimized cable routing (top/bottom) allow a quick and hassle-free installation.

The integrated status LED provides information about the 12V supply on the LMN bus and thus enables easy fault detection.

In installations with many bus devices (e.g. meters) or with long cable lengths, the power supply provided by the gateway may not be sufficient for all bus devices. In these cases, the hub enables an additional power supply via one of the hub ports. Compatible power supplies for DIN rail mounting and suitable cables can be found at <https://enqt.de/en/shop/>.

## Technical details:

<b>Part number</b>	00806
<b>Dimensions</b>	60 x 18 x 69 mm
<b>Weight</b>	41g
<b>HS Code</b>	85176200
<b>Color</b>	blue
<b>Mounting type</b>	DIN rail mounting tool-free installation and removal
<b>Technology</b>	LMN (Local Metrological Network)
<b>Product type</b>	Hub (passive)
<b>Number of ports</b>	6 (3 on top, 3 on bottom side)
<b>Connector</b>	RJ12
<b>Power supply</b>	Hub does not require power supply
<b>Status indicator</b>	Status LED (red) indicating presence of 12V power supply on LMN bus
<b>Temperature range</b>	-40 °C to +85 °C
<b>Flammability</b>	flame-retardant in accordance with UL 94 V-0
<b>Conformity</b>	ROHS, WEEE, CE