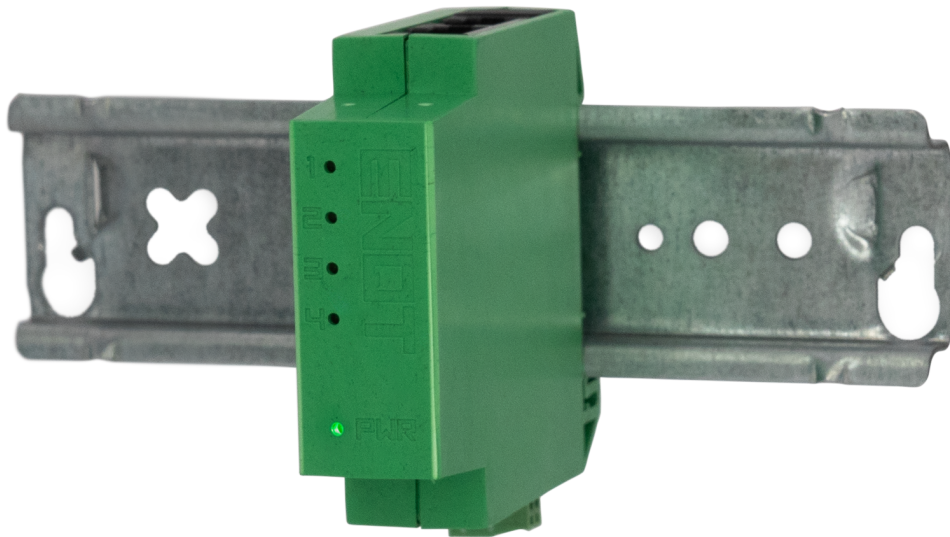


# Ethernet Switch for DIN rail (4 port, 5-24VDC)

**ENQT**  
EXPERTS IN NETWORK  
QUALITY TESTING

TECHNICAL DATA SHEET



Do you have questions about  
our products?

+49 40 3573 20 65

vertrieb@enqt.de

## Description:

The **ENQT Ethernet Switch for DIN rail mounting** is designed specifically for use in meter cabinets. With a width of just 18 mm (1M), this extremely compact and powerful switch features 4 Ethernet ports and is the ideal solution for installations where space is limited. It is perfectly suited for Ethernet-based connectivity of heat pumps, wallboxes, control units, and other controllable appliances ("steuerbare Verbrauchseinrichtungen nach § 14a EnWG") e.g. via EEBUS.

The switch can be mounted quickly and easily on all 35mm DIN rails without using any tools. The top/bottom placement of the RJ45 jacks allow easy cable routing for a clean installation.

The wide DC supply voltage range and low power consumption allow flexible use. The switch is supplied with a matching 2-pin DC plug for open wire mounting.

ENQT offers a compatible power supply unit as part no. HDR-15-12 and via <https://enqt.de/en/product/din-rail-power-supply-unit-12v-dc/>.

## Technical details:

<b>Part number</b>	00894
<b>Product type</b>	Switch (unmanaged)
<b>Technology</b>	IEEE 802.3u 100BASE-TX Fast Ethernet (10/100 Mbit/s)
<b>Connector</b>	RJ45
<b>Number of ports</b>	4 (2 on top, 2 on bottom side)
<b>Mounting type</b>	DIN rail mounting / tool-free installation and removal
<b>Status indicator</b>	Power LED (green) Link LED (yellow, one per port)
<b>Power supply</b>	5V - 24V DC +/- 10%
<b>Power consumption</b>	< 1 W
<b>Power supply connector</b>	Phoenix Contact FK-MC 0,5/2-ST-2,5 or compatible (1 plug included)
<b>Temperature range</b>	-20 °C to +70 °C
<b>Color (enclosure)</b>	green
<b>Flammability</b>	flame-retardant in accordance with UL 94 V-0
<b>Dimensions</b>	60 x 18 x 69 mm
<b>Weight</b>	52 g
<b>Conformity</b>	ROHS, WEEE, CE
<b>Country of origin</b>	Germany

**HS Code**

85176990